

# Travelers Rest Horse Farm

40 Anders Road Greenville, SC 29617



**PURCHASE PRICE: \$449,500**



## 37 Acres in Travelers Rest

- Sales Price \$449,500
- Approximately 37 +/- acres
- A portion of Tax Map : 0510010103400 & 0510010103500
- Power & Water are available
- Mountain Views from multiple possible home sites.
- Private County Road with neighbor large tracts.
- Equestrian property potential, neighbors are 10 & 20 acres horse farms
- Mixture of pasture land, pine & hardwoods, & creek bottom
- Distance to downtown Travelers Rest : 3 miles
- Distance to downtown Greenville : 11 miles



✉ **Tripp Taylor**  
+1 336 260 5523  
ttaylor@naiearlefurman.com

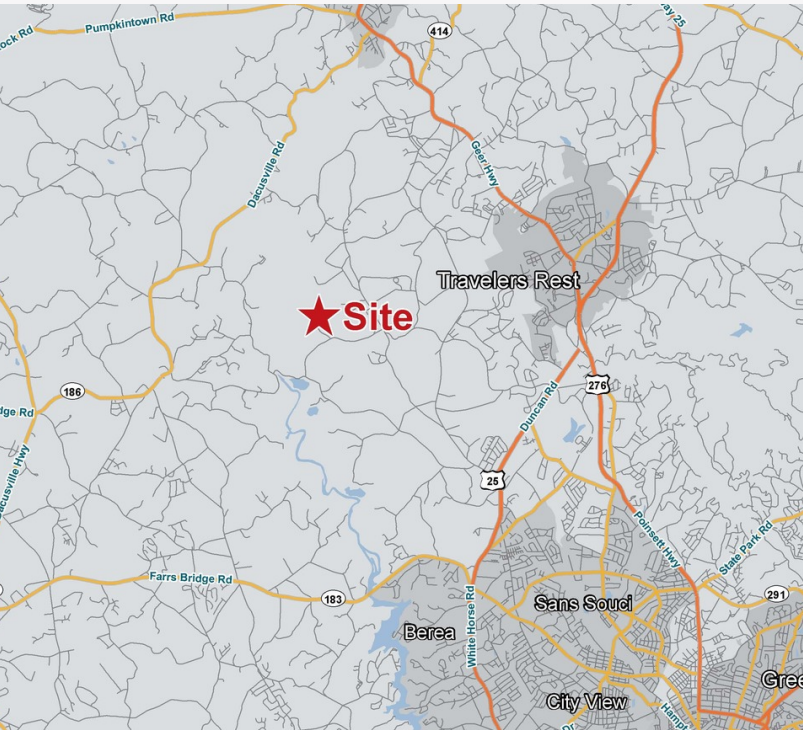
No Warranty Or Representation, Express Or Implied, Is Made As To The Accuracy Of The Information Contained Herein. And The Same Is Submitted Subject To Errors, Omissions, Change Of Price, Rental Or Other Conditions, Prior Sale, Lease Or Financing, Or Withdrawal Without Notice, And Of Any Special Listing Conditions Imposed By Our Principals No Warranties Or Representations Are Made As To The Condition Of The Property Or Any Hazards Contained Therein Are Any To Be Implied.

📍 **101 E Washington St**  
Greenville, SC 29601  
naief.com



# Property Description

## Travelers Rest Horse Farm

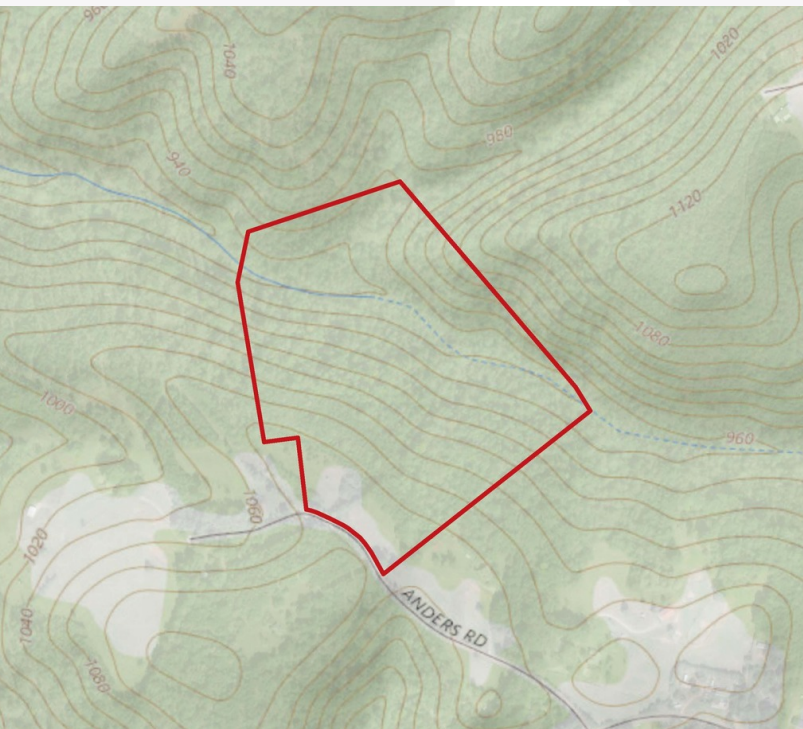


### PROPERTY DESCRIPTION

37 Acres, located minutes from the booming Travelers Rest area. If you are looking for peace & quiet with privacy, you've found it here. The setting is out of a magazine with awesome pasture views 20 minutes from Downtown Greenville. Rolling hills & mountain views. A secluded hill top building site sits ready for a new home. Property sit The property is teeming with wildlife. The concentrated habitat lends the property to focused management of deer, turkeys, & even bear. Allowing predictable movement of Turkey & Deer between water sources, bedding areas, travel corridors and food sources. Within minutes of downtown Travelers Rest, the nearby Saluda River and Swamp Rabbit trail provide recreational opportunities for hiking, paddling, & cycling. The outdoor enthusiast can have access and convenience.

### LOCATION DESCRIPTION

Distance to downtown Travelers Rest : 3 miles  
Distance to downtown Greenville : 11 miles





# Additional Photos

Travelers Rest Horse Farm



✉ **Tripp Taylor**  
+1 336 260 5523  
ttaylor@naiearlefurman.com

No Warranty Or Representation, Express Or Implied, Is Made As To The Accuracy Of The Information Contained Herein, And The Same Is Submitted Subject To Errors, Omissions, Change Of Price, Rental Or Other Conditions, Prior Sale, Lease Or Financing, Or Withdrawal Without Notice, And Of Any Special Listing Conditions Imposed By Our Principals No Warranties Or Representations Are Made As To The Condition Of The Property Or Any Hazards Contained Therein Are Any To Be Implied.

